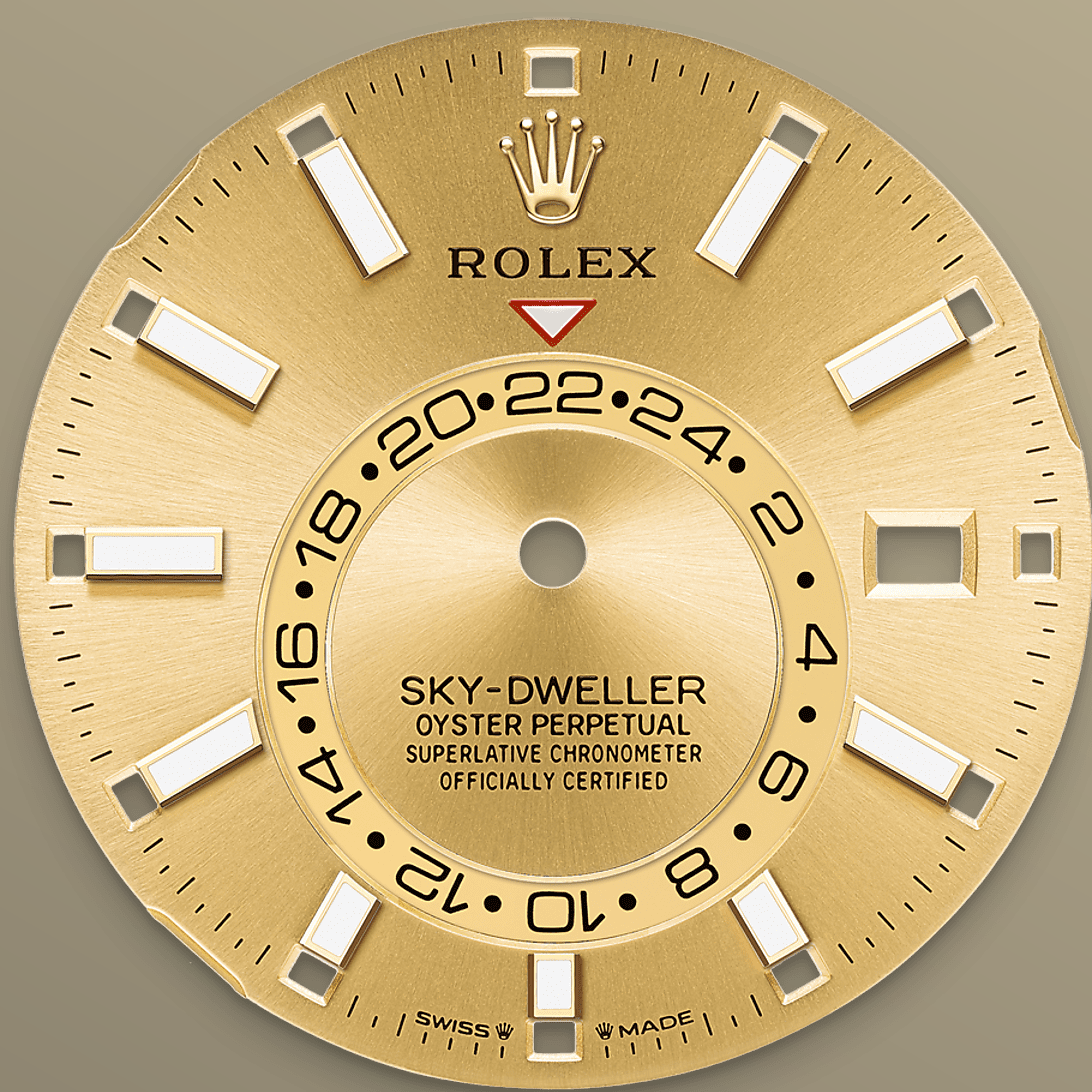




Sky-Dweller

Oyster, 42 mm, Oystersteel and yellow gold

**The Oyster Perpetual
Sky-Dweller in
Oystersteel and yellow
gold with a champagne-
colour dial and an
Oyster bracelet.**



CHAMPAGNE-COLOUR DIAL

A striking characteristic

A fixed inverted red triangle on the dial points to the chosen reference time – the time at home or at the traveller's usual workplace – on the off-centre 24-hour disc. At a glance, this 24-hour display clearly distinguishes daytime hours from night-time hours in the other time zone.

A deep red rectangle in one of the 12 windows around the dial indicates the current month, a striking characteristic of the Saros annual calendar. This ingenious mechanism simplifies life for the wearer of the watch, who no longer needs



THE FLUTED BEZEL

A Rolex signature

The Rolex fluted bezel is a mark of distinction. Originally, the fluting of the Oyster bezel had a functional purpose: it served to screw the bezel onto the case, helping to ensure the waterproofness of the watch.

It was therefore identical to the fluting on the case back, which was also screwed onto the case for waterproofness, using specific Rolex tools. Over time, the fluting became an aesthetic element, a genuine Rolex signature feature. Today the fluted bezel is a mark of distinction, always in gold. The

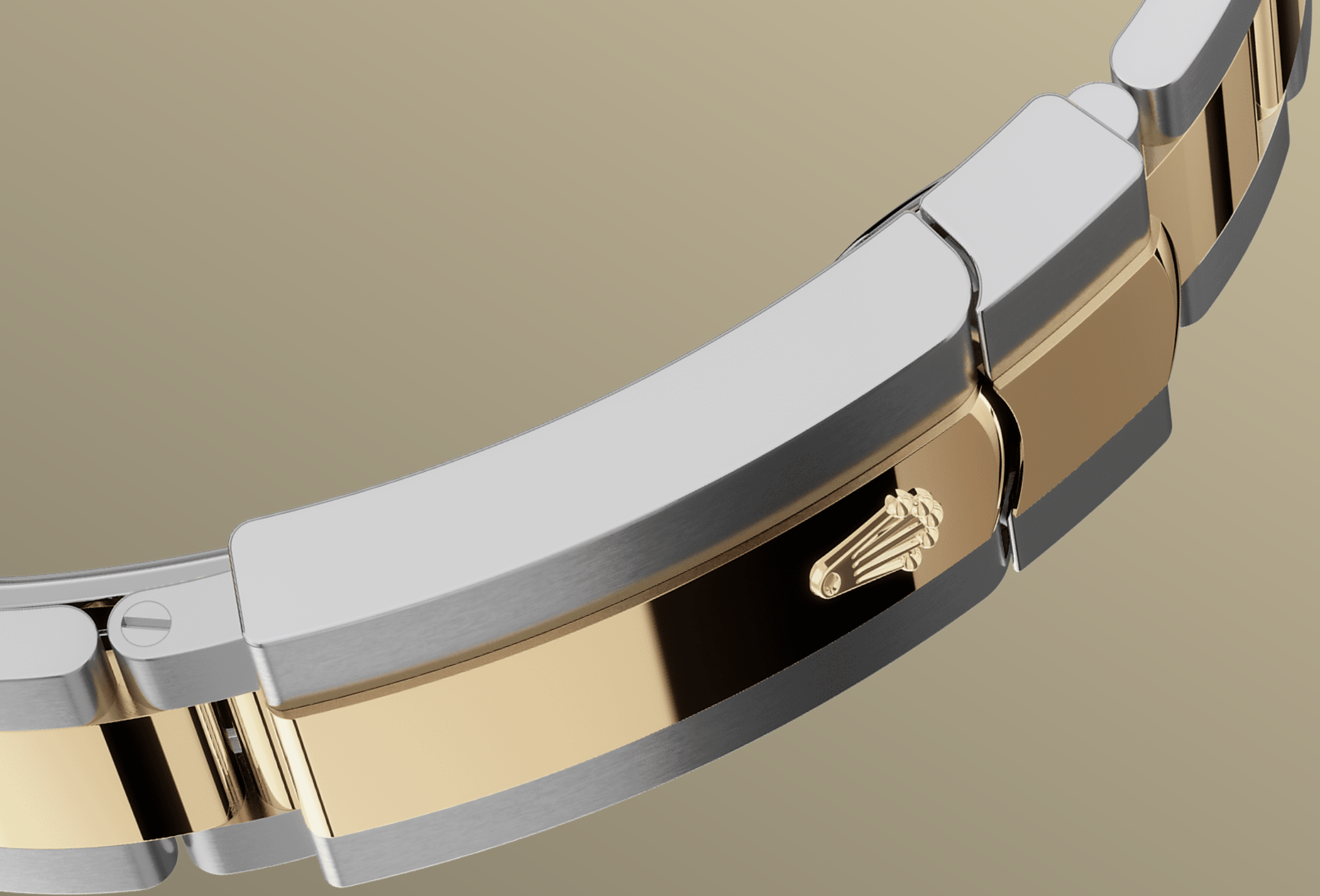


YELLOW ROLESOR

A meeting of two metals

Gold is coveted for its lustre and nobility. Steel reinforces strength and reliability. Together, they harmoniously combine the best of their properties.

A true Rolex signature, Rolesor has featured on Rolex models since the early 1930s, and was trademarked as a name in 1933. It is one of the prominent pillars of the Oyster collection.



THE OYSTER BRACELET

Alchemy of form and function

The Sky-Dweller is fitted on a solid-link Oyster bracelet in Oystersteel, in the case of the white Rolesor version, or, for the yellow Rolesor version, an Oyster bracelet combining Oystersteel and yellow gold.

The Oyster bracelet benefits from the new concealed attachment system beneath the bezel which ensures seamless visual continuity between the bracelet and case. It is equipped with a folding

More Sky-Dweller

technical details

Reference 336933

Model Case

Type

Oyster, 42 mm, Oystersteel and yellow gold

Diameter

42 mm

Material

Yellow Rolesor

Bezel

Fluted, bidirectional rotatable Rolex Ring Command

Oyster Architecture

Monobloc middle case, screw-down case back and winding crown

Winding Crown

Screw-down, Twinlock double waterproofness system

Crystal

Scratch-resistant sapphire, Cyclops lens over the date

Water Resistance

Waterproof to 100 metres / 330 feet

Movement

Type

Perpetual, mechanical, self-winding, dual time zones, annual calendar

Calibre

9002, manufacture Rolex

Precision

-2/+2 sec/day, after casing

Oscillator

Paramagnetic blue Parachrom hairspring. High-performance Paraflex shock absorbers

Winding

Bidirectional self-winding via
Perpetual rotor

Power reserve

Approximately 72 hours

Functions

Centre hour, minute and seconds
hands. 24-hour display on off-
centre disc. Second time zone.
Instantaneous annual calendar at 3
o'clock and rapid-setting of the
date. Month display via 12
apertures around the circumference
of the dial. Stop-seconds for
precise time setting

Bracelet

Type

Oyster, three-piece solid links

Clasp

Folding Oysterclasp with Easylink 5
mm comfort extension link

Bracelet Material

Yellow Rolesor - combination of
Oystersteel and yellow gold

Dial

Type

Champagne-colour

Details

Highly legible Chromalight display
with long-lasting blue luminescence

Certification

Type

Superlative Chronometer (COSC +
Rolex certification after casing)

Explore and discover more on Rolex.com

All intellectual property rights such as trademarks, service marks, trade names, designs and copyrights are reserved.

Nothing contained in this website may be reproduced without written permission. Rolex reserves the right at all times to modify the models featured in the present website.

